



**SACRAMENTO STATE**

## Environmental Update 2025

Presentation to Business Partner's Roundtable  
February 11, 2025  
Bob Hitomi  
Environmental Specialist



1

---

---

---

---

---

---

---

---

## Environmental Update 2025

### Environmental Regulations That Sacramento State Must Comply With:

- Hazardous Materials/Waste Management
- Campus Universal Waste Recycling
- Storm Water Pollution Prevention

2

---

---

---

---

---

---

---

---

## Hazardous Materials/Waste Management

- **Hazardous Materials (Safe Handling In Use)**
  - Users of hazardous materials should have Hazardous Communication (HazCom) training
- **Hazardous Materials Spills**
  - Small Spills (EH&S can provide spill kits)
  - Large Spills (Contact EH&S)
- **Hazardous Waste Training (where applicable)**
  - Initial training and annual refresher required for those who generate hazardous waste on a regular basis
  - Work with EH&S to set up required Learning Tracks

3

---

---

---

---

---

---

---

---

## Hazardous Waste Management

- **Hazardous Waste Definition**
  - Exhibit properties that can have a harmful effect on human health and/or the environment
    - Household Cleaning Chemicals
    - Oils, Lubricants, Paints (oil based)
    - Pesticides, herbicides
- **Hazardous Waste Determination/Handling**
  - Identify that the product is no longer needed or usable
  - Identify the characteristics that make it hazardous
  - Properly label container as hazardous waste (Get Label from EH&S)
  - Properly store until it can be picked up by EH&S

4

---

---

---

---

---

---

---

---

---

---

## Environmental Health & Safety Webpage For Hazardous Waste Pickups

5

---

---

---

---

---

---

---

---

---

---

## Environmental Health & Safety Hazardous Waste Pickup Request

6

---

---

---

---

---

---


---

---

---

---

## Campus Universal Waste Recycling



- Batteries
- Lights
- Mercury containing devices (Thermometer)
- Non-empty aerosol cans (liquid or propellant still present)

7

---

---

---

---

---

---

---

---

## Universal Waste Management

- **Why Recycle Universal Waste ?**
  - Small amounts of mercury (lights)
  - Small amounts of toxic metals (batteries)
  - Prevent contamination of soil/ground water in landfills
- **Requirements for Universal Waste Management**
  - Proper labeling
  - Store in closed container
  - Time limit on Satellite Accumulation (1 year maximum)
- **Notify EH&S for pickup or for assistance with any or all of the above**

8

---

---

---

---

---

---

---

---

## Environmental Health & Safety Webpage For Universal Waste Pickups



9

---

---

---

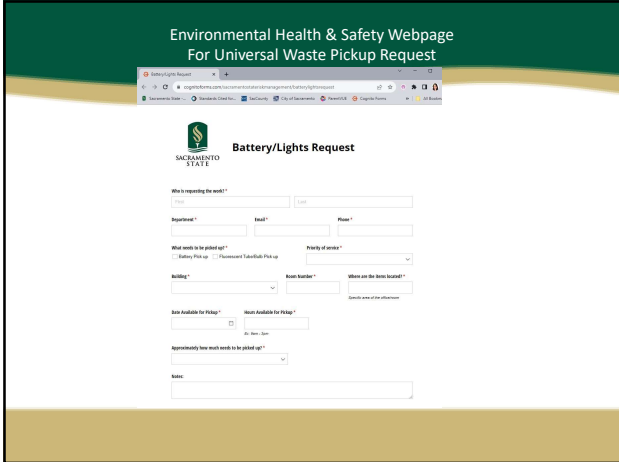
---

---

---

---

---



10

---

---

---

---

---

---

---

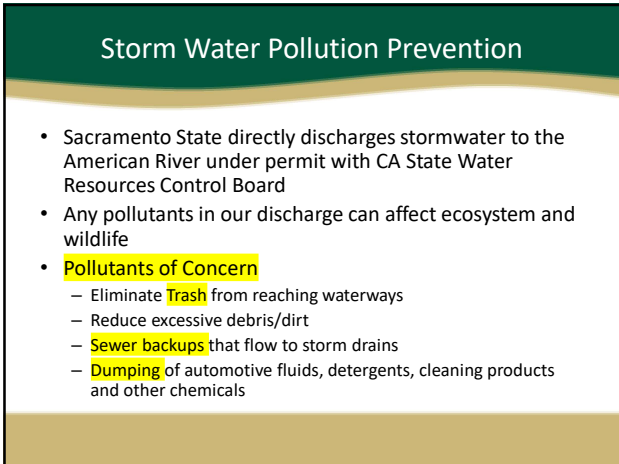
---

---

---

---

---



11

---

---

---

---

---

---

---

---

---

---

---

---



12

---

---

---

---

---

---

---

---

---

---

---

---

## Illicit Discharge



- Report any illicit discharges or illegal dumping
  - Oil/Gas/Coolant Leaks from Vehicles
  - Sewage Backups
- Facilities 8-6242
- EHS 8-2020

<http://www.csus.edu/aba/EHS/report-stormwater-pollution.html>

13

---

---

---

---

---

---

---

---

## Contact Information

Bob Hitomi  
 Environmental Specialist, CHMM  
 Office of Environmental Health and Safety,  
 Risk Management Services  
 916-278-5165 (Office)  
**916-278-2020 (EH&S HOTLINE- For Urgent Calls)**  
[hitomib@csus.edu](mailto:hitomib@csus.edu)

14

---

---

---

---

---

---

---

---